

STATE OF INDIANA)
) SS:
COUNTY OF BROWN)

ELECTION BOARD

RESOLUTION NO. _____

ORDER OF THE BROWN COUNTY ELECTION BOARD APPROVING PROPOSED VOTE CENTER PLAN

The Brown County Election Board ("Board"), in accordance with applicable law, unanimously adopts this resolution effective August 12, 2025, according to the terms and conditions as set forth below, to-wit:

WHEREAS, the Board has undertaken an initiative to propose a Vote Center Plan ("Plan") according to IC 3-11-18-1 to 3-11-18-20 to the Brown County Board of Commissioners and Brown County Council and, if they approve, then approve the Plan and deliver it to the Election Division of the Indiana Secretary of State's Office; and,

WHEREAS, the Board seeks to have Vote Centers approved for the May 2026 primary election; and,

WHEREAS, the Board appointed a study committee made up of Mark Bowman, Republican Party; Darren Byrd, County Council; Shari Frank, League of Women Voters; Amy Oliver, School Board; and, Lora Lewis Rudd, Democratic Party ("Committee") working with the Board to seek a wide variety of Brown County voters' opinions and to study the feasibility of the locations proposed as vote centers by the Board; and,

WHEREAS, the Board intends to use four (4) public school buildings owned by the Brown County School Corporation. The Board chose these public education buildings locations, because of their central location in each township, their compliance with the accessibility requirements for ingress and egress as stated in IC 3-11-8, and the cooperation of the Superintendent and the Board of Trustees in aligning the school year calendar for 2026 and 2027 in order to have the school buildings closed for primary and general election days; and,

WHEREAS, the Board decided to open a fifth vote center at the Church of the Lakes to better accommodate the cluster of voters in the lakes region; and,

WHEREAS, the Board has held three (3) advertised public meetings on May 6, at 1:00 pm, May 22, at 6:00 pm and June 18, at 2:00 pm, each in the Salmon Room of the county office building, seeking input and answering questions from the floor; and,

WHEREAS, voter support for vote centers at public meetings has been overwhelmingly favorable and throughout the public meeting schedule, the county's weekly newspaper, *The Brown County Democrat* has published no editorials or Letters to the Editor expressing disapproval or concern about voter centers; and,

WHEREAS, the Board and the Committee have completed their preliminary investigation including debating the proposed locations of the vote centers, considering the comments of voters at public meetings and physically inspecting each proposed vote center location to assure: compliance with access requirements according to IC 3-11-8; sufficient power access to operate equipment; ingress and egress; and, sufficient room to set up the equipment for convenient and efficient voting;

NOW, THEREFORE, the Board intends to hold a public hearing according to IC 3-11-18.1-3(c) to present this draft plan according to IC 3-11-18.1-4 and IC 3-11-18.1.7, as follows:

(1.) *Five (5) vote centers shall be established.*

(2.) The location of each vote center is as follows:

(a.) *Church of the Lakes, 8844, Nineveh Rd., Nineveh, IN 46164;*

(b.) *New Gym at the Educational Services Center, 260 School House Lane, Nashville, IN 47448, enter through Door 12 (access from high school parking lot);*

(c.) *Helmsburg Elementary School, 5878 Helmsburg School Road, Morgantown, IN 46160;*

(d.) *Sprunica Elementary School, 3611 Sprunica Road, Nineveh, IN 46164; and*

(e.) *Van Buren Elementary School, 4045 SR-135 South, Nashville, IN 47448.*

(3.) *Pursuant IC 3-11-18.1-8(a), the final order will be effective when it is filed with the Election Division of the Office of the Secretary of State. Brown County anticipates moving to vote centers for the 2026 primary election and 2026 general election voting cycle.*

(4.) On or about the date of this order according to the computerized list (as defined in IC 3-7-26.3):

(a.) *The total number of voters within the county is 12,593.*

(b.) *The number of active voters within the county is 12,282.*

(c.) *The number of Inactive voters within the county is 311.*

(5.) For each vote center designated under section (2.), the number of precinct election boards that will be appointed to administer an election at the vote center are as follows:

One (1) precinct election board will be appointed to administer an election: 1 Inspector (currently, to be a Republican) and 2 judges (one of each major political party) at each vote center.

(6.) For each precinct election board designated under paragraph 5., state the number and name of each precinct the precinct election board will administer consistent with section 13 of this chapter for an election that that is not being held in each precinct of the county.

IC 3-11-18.1-13 provides in material part, "A voter who resides in a vote center county is entitled to cast a ballot at any vote center established in the county without regard to the precinct in which the voter resides."

For special elections conducted in only part of the county and not on the same date as a primary or general election held in the county, at least one of the vote centers covering the affected precincts (election district) shall be used; provided that, in any event one vote center

for each ten thousand (10,000) active voters or fraction in excess thereof residing within the election district shall be used. See Indiana Code 3-11-18.1-6.

(7.) For each vote center designated under paragraph 2., the number and title of the precinct election officers who will be appointed to serve at the vote center, shall be as follows.

A minimum staff of nine (9) precinct election officials: one (1) Inspector, two (2) Judges, four (4) Poll-Clerks and two (2) Greeters, with equal numbers of Republicans and Democrats in each role -- except for the Inspector.

(8.) Each vote center designated under paragraph (2) shall utilize ballot cards (i) hand-marked and (ii) machine marked based on voter digital input (the Unisyn Freedom Vote machines). Ballot cards not generated by the Unisyn Freedom Vote machine will be printed on demand and will be hand-marked by the voter.

(9.) A detailed description of any hardware, firmware or software used to manage data in an electronic poll book through a secure electronic connection between the county election board and the precinct election officials administering a vote center is stated as follows:

All electronic poll books are VR Systems Evid MH5100 -- hardware and software workstation 24.01.002.002.

(10.) Describe the equipment and procedures used to ensure that information concerning a voter entered into the any electronic poll book used by precinct officers at a vote center is immediately accessible to (A) the county election board; and, (B) the electronic poll books used by precinct election officers at all other vote centers in the county.

The VR Systems EViD (Electronic Voter iDentification) is an electronic pollbook system (used in place of printed paper pollbooks) to check in voters, determine whether voters have already received or voted a ballot and update voter information. These electronic pollbooks have been certified by the Indiana Secretary of State, State Elections Division for vote center use. The term EViD as used in this document refers to the electronic pollbooks used at each of the polling places.

Data is downloaded from the Indiana State Voter Registration System through an encrypted network and delivered to the County Clerk's ("Clerk") office. Each pollbook will be loaded:

(a.) with a thumb drive containing the information of Brown County active and inactive voters. If a voter's information is incorrect, a Poll-Clerk worker (in pairs of one Democrat and one Republican) can, with proper documentation, update a voter's name or address or move a voter's precinct; and,

(b.) with an activator which empowers the equipment software -- populated through an encrypted network.

Each poll book receives power from a wall receptacle and is supported by a battery backup.

The county-wide voter data base installed on each poll book is refreshed as voting continues throughout election day (as well as during mail in and early voting.) Updates are moved between the EViD stations at each vote center and early voting location to the Clerk's

database through an encrypted LAN using a store and forward mechanism connecting the Clerk's office and all EViD devices. In the event communications at any location breaks down, service to the voters is continued without break; and, once communications are restored, the system immediately notifies the Clerk's office so that the issue can be promptly fixed. Once restoration of communications is re-established, the system clears any backlog of updates between the county database and the affected EViD station.

The Election Board has real time access to all voting data through the Clerk's terminal.

(11.) At each vote center, will each ballot card have the printed initials of the Poll-Clerks captured through the electronic signature pad or tablet at the time the Poll-Clerks log into the electronic poll book system printed on the back of the ballot card immediately before the ballot card is delivered to a voter?

The Inspector shall designate two (2) Poll-Clerks at each vote center, one Republican and one Democrat, whose exclusive job will be to initial ballots by hand and confirm their proper initials are on a ballot before it is placed in the tabulator.

(a.) For voters casting ballots made by "on-demand" printers, each Poll-Clerk will initial the ballot by hand and confirm the presence of both sets of initials before the ballot is delivered to the voter.

(b.) For voters casting ballots using the Unisyn Freedom Vote machine, the Poll-Clerks will first instruct the voter about the process for marking their ballot, folding it for confidentiality purposes and returning the marked ballot to the designated set of Poll Clerks. At this point, the Poll-Clerks will each initial the ballot by hand. Once this ballot is properly initialed, the voter can then place the ballot in the tabulator.

(12). What are the security and contingency plans to be implemented by the county to do all of the following: (a) prevent a disruption of the vote center process; (b) ensure that the election is properly conducted if a disruption occurs; and (c) prevent access to an electronic poll book without the coordinated action of two (2) precinct election officers who are not members of the same political party.

-- **Physical Security.** The Brown County Election Board will follow the Indiana State's Indiana Polling Place Physical Security Guidelines at all vote centers and satellite early voting locations. The plans to maintain physical security are as follows:

(a.) Prior to every election, each polling place shall receive a thorough physical inspection performed by the Inspector to ensure only those authorized to enter the polling place will have access.

(b.) Custodians of voting machines, including those in the polling place on Election Day, shall be fully competent and sworn to perform their duties honestly and fairly.

(c.) No one, INCLUDING POLL WORKERS, will be allowed unsupervised access to voting machines.

(d.) At least two election officials shall oversee all processes, including the transfer of ballots and other election materials from the polling place to the central canvassing office.

(e.) Voting devices must be in plain view of poll workers at all times. Poll workers must maintain control of all administrator and ballot activation devices.

(f.) Only poll workers, legally authorized personnel and registered voters shall be allowed in the voting device area, without exception. A voter shall not be allowed to enter this area until a voting device or voting kiosk is made available for voter's use.

(g.) Provisional voters will be directed to a separate area that assures that provisional ballots are handled uniformly and also to establish accountability for auditing purposes.

(h.) Poll workers shall regularly inspect the voting devices for any damage or tampering, and to assure that the device is operating under wall socket supplied power. Poll workers shall also check the power supply connection for voting equipment standby batteries.

(i) Unauthorized devices shall NOT be connected to any voting or voting-related equipment. There are no exceptions. Poll workers shall immediately remove any such device and immediately report the situation to the Board.

(j.) The Inspector shall contact the Clerk's office, the Board and law enforcement to report any suspicious activity. The reporting threshold for suspicious activity is low and reporting must happen immediately when an Inspector sees it or receives notice of suspicious activity from another person.

-- Equipment Operation and Security. From time to time, election equipment may experience an operational issue. In such cases, the Inspector will immediately report the problem to the Board or the Clerk's office. If Board members cannot solve the problem by telephone, the Board will dispatch two technicians (one from each political party). The Clerk may also: (i) dispatch a representative of the voting equipment vendor to make repairs; or, (ii) engage a vendor representative to confer with the Inspector and Clerk over the telephone. If the technicians or vendor representative determine that a piece of equipment cannot be repaired in a timely manner, a backup piece of equipment may be substituted by authorized personnel under the direction and supervision of the Clerk or the Board.

-- Power failure and/or natural disaster. Prior to any date when in-person voting will occur, the Clerk will contact the power companies serving the vote center locations to determine whether there are any planned power disruptions on those days. In the event a power company has planned a disruption, the Clerk and the Board shall immediately evaluate other options and take action pursuant to IC 3-11-8-3.2.

(a.) Back up batteries connected to all equipment required in the voting process will immediately provide power. If a power disruption occurs, the Inspector shall notify the Clerk. The Clerk will take all reasonable steps to obtain a generator immediately. In the event that there is no available generator and the equipment

batteries located at the affected vote center location are, in the opinion of the Board, ready to fail, the vote center will be closed. If this occurs, the Inspector will close the polls according to normal end of day procedure and all waiting voters will be directed to the other vote centers. The Inspector shall place a notice on the door so directing voters to other vote center locations.

(b.) In the event of a natural disaster, the Board will work with the Brown County Board of Commissioners, the Brown County Emergency Management Authority, the Indiana Election Division and other government authorities as directed.

(13.) Are all vote centers accessible as required by Indiana Code 3-11-8?

To assure its compliance with the Help America Vote Act of 2002 ("Act"), the Board, or its designated agents, will visit each vote center location prior to each election to be sure it meets the requirements of the Act. Prior to each election, the Board will record in its minutes that the following issues were examined and prepared for voters in compliance with the Act.

Physically Accessible Facility: Each vote center including entrances, pathways, and the voting area, will be accessible to individuals with disabilities, including those with mobility issues and those who are blind or visually impaired. To identify and mark wall-mounted fixtures or equipment protruding more than four (4) inches from the wall, the Clerk shall provide traffic cones to the Inspector for placement.

Accessible Entrance: The Board will ensure that each polling place has at least one accessible entrance with a clear width of at least 32 inches for those who use a wheelchair.

Assistance Available: A voter with disabilities may receive assistance with voting from a relative or friend. If the voter is alone, they may receive assistance with voting from two poll workers, one from each political party. If a voter has assistance with voting, the designated helper(s) must complete an Affidavit of Voter Assistance at the Polls.

Accessible Parking: The Board and the Inspector will provide clearly marked, accessible parking spaces with appropriate signage and traffic cones at all vote centers.

Accessible Voting Systems: The Board and the Inspector will ensure that there accessible voting systems at each vote center.

Notification of Problems. If a voter or a voter's designated assistant encounters a vote center that does not meet the requirements of the Act, they may ask the Inspector to make adjustments accommodating the voter's needs or they may ask the Inspector to contact the Board for further guidance.

(14.) Exhibit A shows maps of the planned layout of each vote center. The maps show locations of voting equipment and precinct election officers.

(15.) The absentee early voting satellite office as provided under Indiana Code 3-11-10-26.3 day shall be located at the Performance Stage Building at the Brown County Fairgrounds, Memorial Drive, Nashville, Indiana 47448. In the event such location is not available, a substitute location will be identified and ordered by the Board and the new location will be

published on the Clerk's webpage as well as in the local weekly newspaper, the *Brown County Democrat*.

According to IC 3-11-18.1-4(15) and IC 3-11-10-26.3 the Board shall provide a vote center for absentee early voting on the two (2) Saturdays immediately preceding a county primary, general or special election day. The vote center location for the second Saturday preceding any election day shall be Helmsburg Elementary School, 5878 Helmsburg School Road, Morgantown, IN 46160, during the hours 8:00 am to noon; and the vote center location for the Saturday immediately preceding any election day shall be Van Buren Elementary School, 4045 SR-135 South, Nashville, IN 47448, during the hours noon to 4:00 pm. In the event either or both of these locations are not available on the appointed date(s), the Board will identify and order a substitute vote center(s) location(s) which will be advertised as described above.

(16.) What are the methods to provide without unreasonable delay voter data to persons who are entitled to receive such data?

Poll Watchers and others authorized to receive voter data should contact the Clerk's office in advance. The Chair of the Brown County Republican Central Committee, the Chair of the Brown County Democratic Central Committee and the county weekly newspaper, the *Brown County Democrat*, will receive tapes without request.

(17.) Vote centers shall not be used in any municipal election unless (1) the population of any incorporated municipality exceeds three thousand five hundred and (2) that municipality has not established a town election board. (See IC 3-11-18.1-5.)

(18.) The Board has determined that the secure electronic connection used to manage data to the electronic pollbooks at a vote center is sufficient to prevent: (A) any voter from voting more than once; and, (B) unauthorized access by any person to the such electronic poll lists or a computerized list of voters of the county.

In making this determination, the Board has relied materially on the decision of the Indiana Secretary of State: Election Division which authorizes VR Systems to market its poll books to counties in Indiana -- including vote center counties. The Indiana Election Division relied on the Voting System Technical Oversight Program (VSTOP). VSTOP was founded by the Indiana General Assembly with funding from the Help America Vote Act (HAVA) and provides complete testing protocols for all electronic poll books and certification recommendations.

VSTOP tests all election equipment used in Indiana for an added layer of safety and security. After VSTOP reviews any system to ensure its compliance with the law, their recommendation is presented to the bi-partisan Indiana Election Commission. The Board, during its election preparations, follows all testing and security protocols published by the State Election Division and reports all results to the State Election Division.

(19.) The following Exhibits are attached hereto and incorporated with this Order of the Brown County Election Board Approving Vote Center Plan:

Exhibit A: The layout sketch of each vote center;

Exhibit B: Maps outlining current precincts, the location of polling places used in the 2024 election cycle and the of the location of each vote center proposed and identified in this Plan;

Exhibit C: A table showing the total number of voters per precinct as most recently reported in the Indiana Voter Registration System) and total active voters for each precinct;

Exhibit D: Brown County Board of Commissioners Resolution in support of this Vote Center Plan; and

Exhibit E: Brown County Council Resolution in support of this Vote Center Plan.

Approved on the date first set forth above:

Brown County Election Board

By: 
Mark Williams, Chair

By: 
Rick Kelley, Member


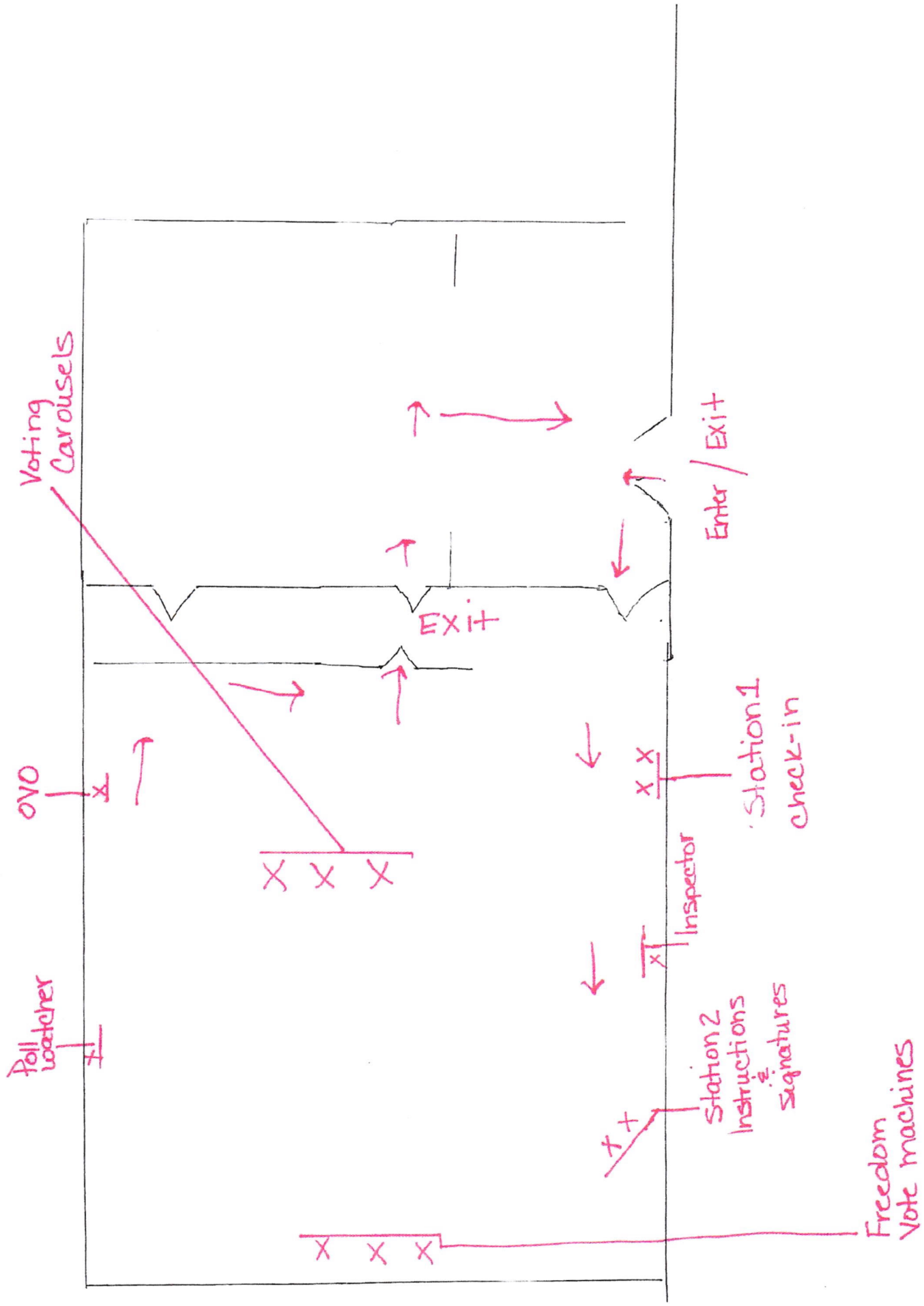
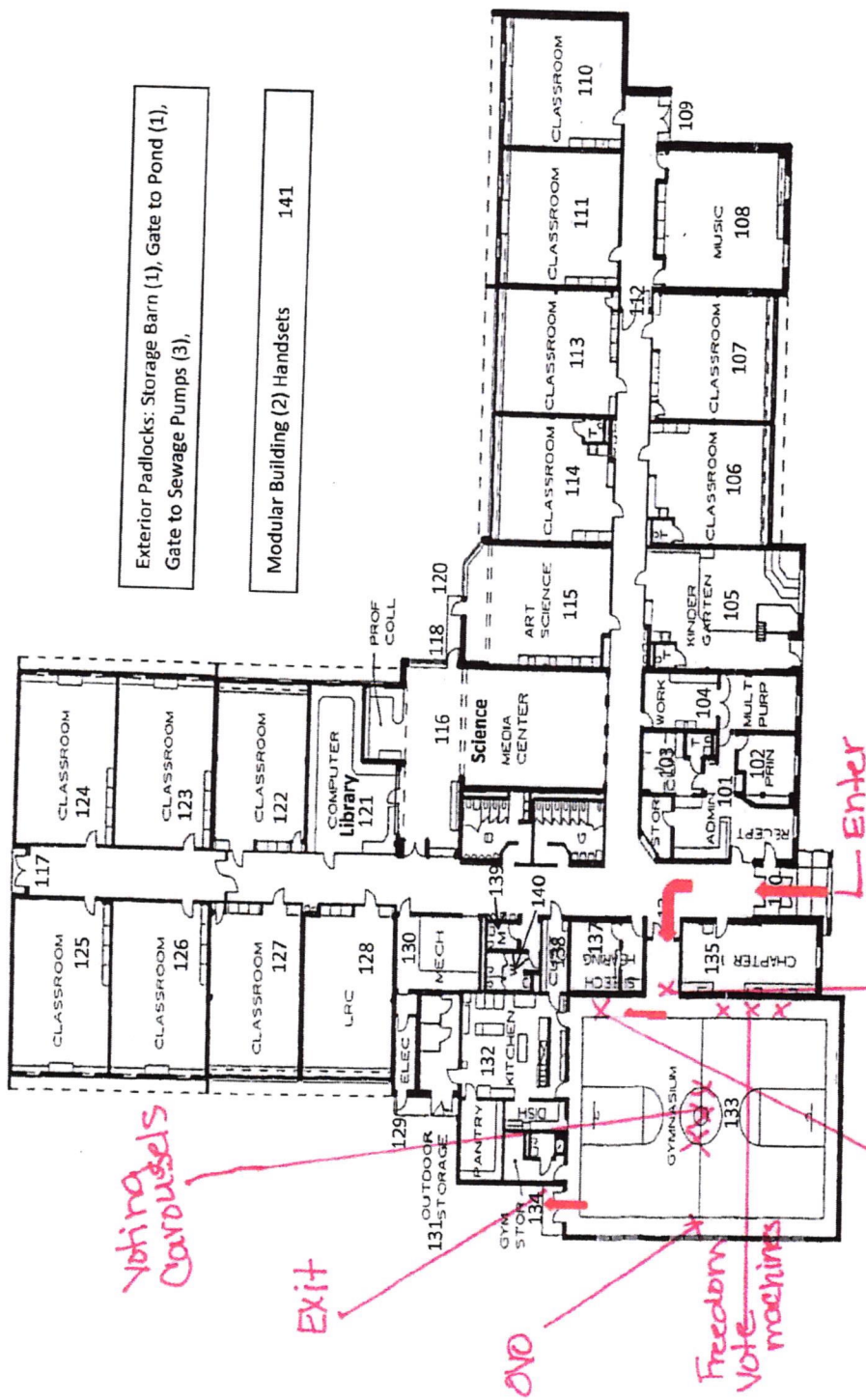
By: 
Pearletta Banks, Clerk of the
Circuit Court and Secretary

Exhibit A
Layout sketches of each vote center location
Exhibit commences on next page



Church of the Lakes

Hand-drawn floor plan of a building with red annotations for a security drill. The plan shows rooms numbered 143 to 170. Red arrows indicate the flow: ENTER (143) -> Station 1 (144) -> Station 2 (145) -> Exit (146). Red 'X' marks are placed in rooms 147, 148, 149, 150, 151, 152, 153, 154, 155, 156, 157, 158, 159, 160, 161, 162, 163, 164, 165, 166, 167, 168, 169, 170. Red text labels include 'ENTER', 'Station 1 Check-in', 'Station 2 Instructions & Signatures', 'Exit', 'Freedom Vote machines', and 'Voting Carousels'.



Exterior Padlocks: Storage Barn (1), Gate to Pond (1), Gate to Sewage Pumps (3).

Modular Building (2) Handsets 141

FIRST FLOOR PLAN



HELMSBURG ELEMENTARY SCHOOL
BROWN COUNTY INDIANA

EVERETT I. BROWN
Architects & Engineers

Freedom
Vote machines

Voting Carousels

Station 2
Signatures
Instructions

Station 1
Check-in

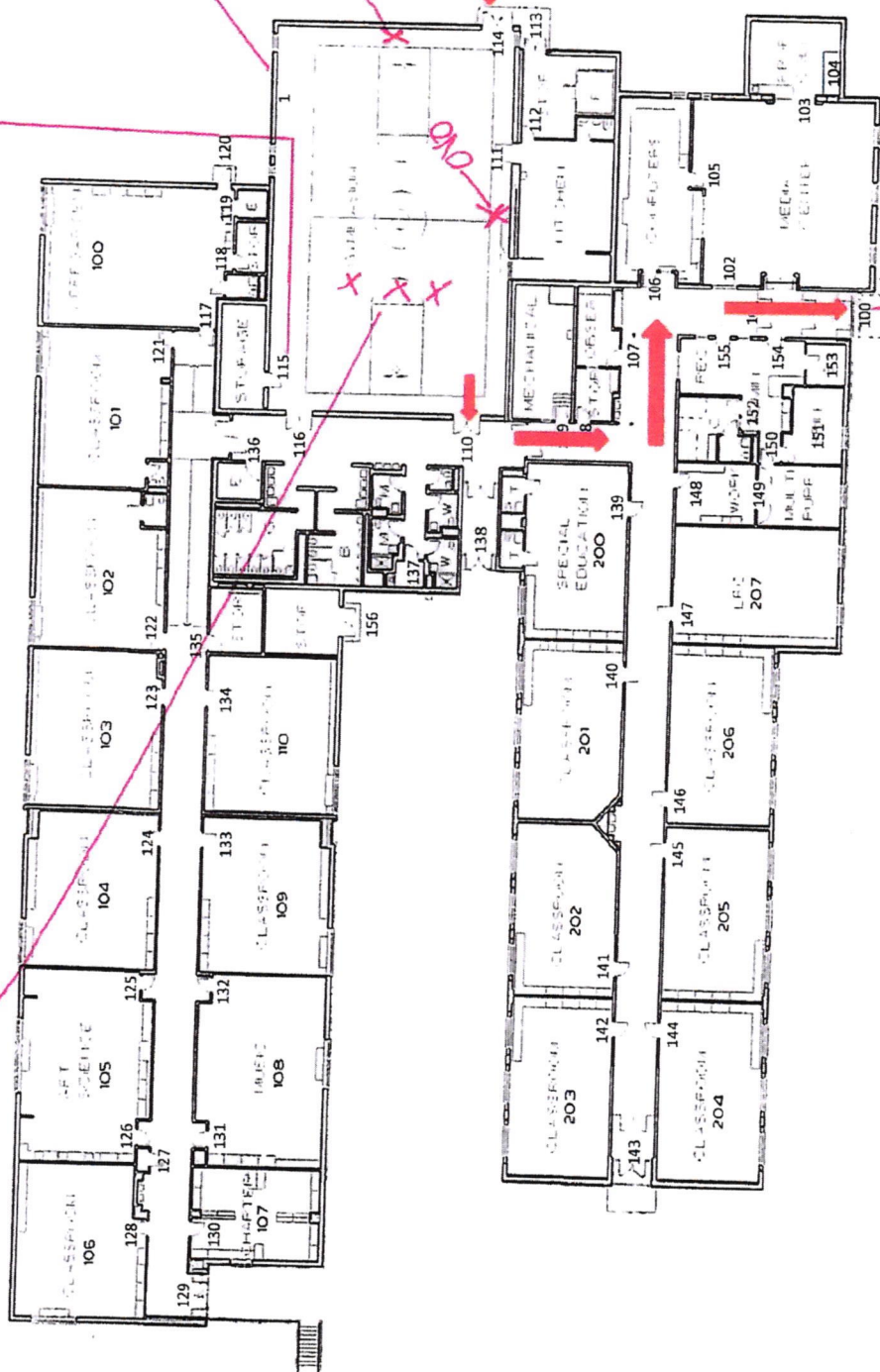
ENTER

EXIT

FIRST FLOOR PLAN

SPRUNICA ELEMENTARY SCHOOL
BROWN COUNTY INDIANA

Gibraltar Dr





VAN BUREN ELEMENTARY

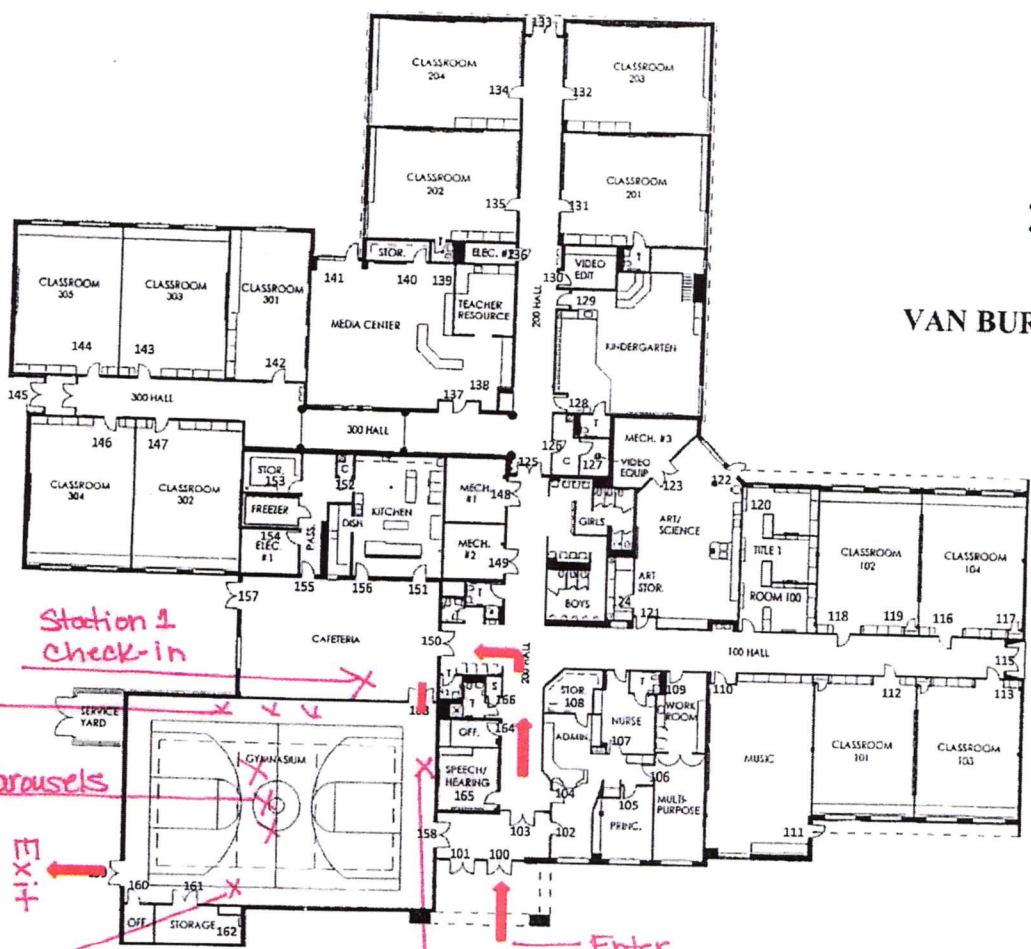
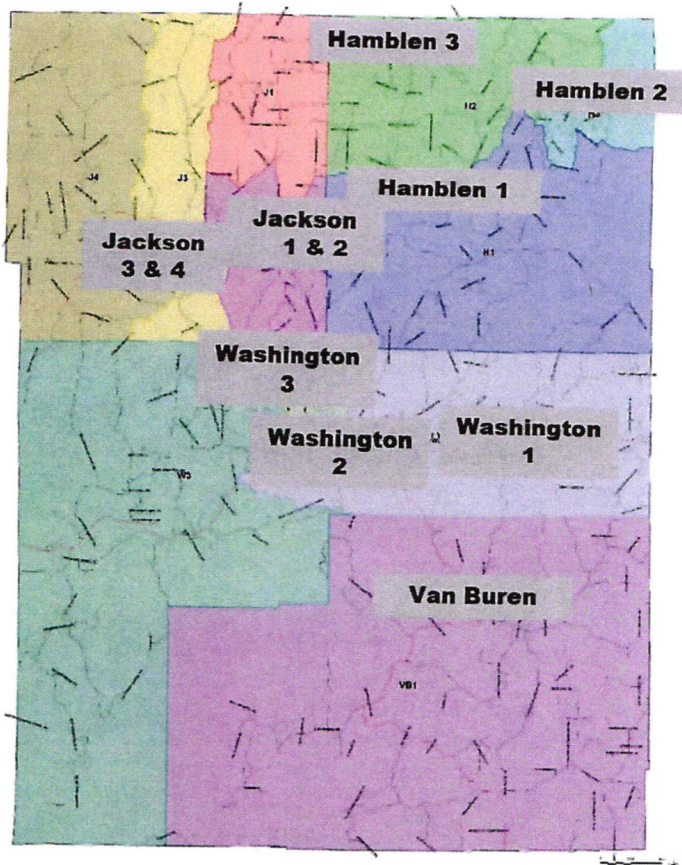


Exhibit B

Precinct maps, 2024 precinct polling locations, vote center locations
Exhibit commences on next page

2024 Election Polling Locations



2026 Proposed Vote Center Locations

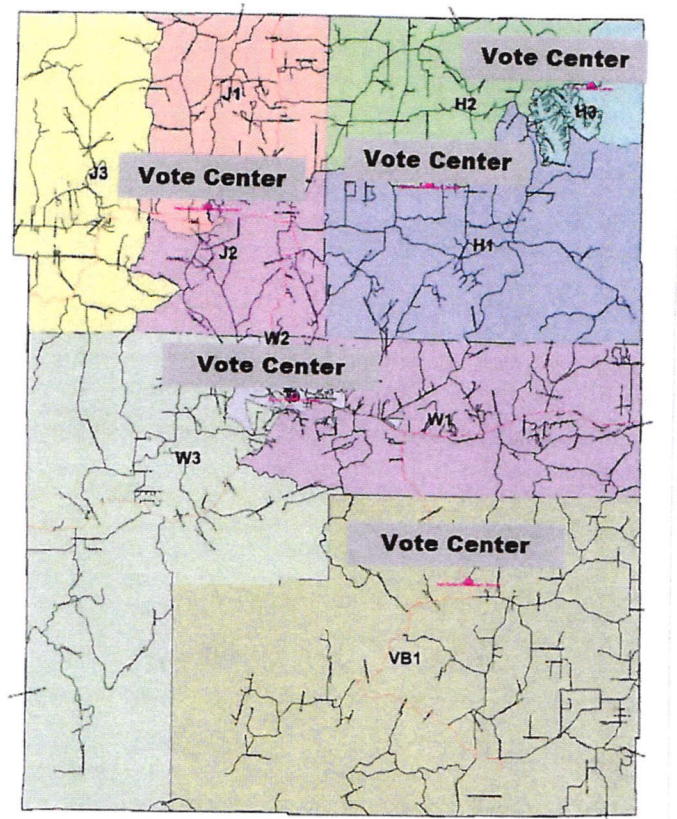


Exhibit C

Table of total registered voters per precinct and total active voters by precinct
Exhibit commences on next page

Registered Voters

Hamblen 1 – 1182
Hamblen 2 – 1372
Hamblen 3 – 1027

Jackson 1 – 1041
Jackson 2 – 681
Jackson 3 – 783
Jackson 4 – 769

Van Buren – 1548

Washington 1 – 1883
Washington 2 – 1036
Washington 3 – 1271

Active Voters

Hamblen 1 – 1162
Hamblen 2 – 1344
Hamblen 3 – 1015

Jackson 1 – 1026
Jackson 2 – 654
Jackson 3 – 762
Jackson 4 – 747

Van Buren – 1513

Washington 1 – 1829
Washington 2 – 998
Washington 3 – 1232

Inactive Voters

Hamblen 1 – 20
Hamblen 2 – 28
Hamblen 3 – 12

Jackson 1 – 15
Jackson 2 – 27
Jackson 3 – 21
Jackson 4 – 22

Van Buren – 35

Washington 1 – 54
Washington 2 – 38
Washington 3 - 39

Exhibit D
Commissioners resolution in support of this Vote Center Plan
Exhibit commences on next page

**FINAL APPROVAL OF THE VOTE CENTER PLAN BY THE BOARD OF COMMISSIONERS
IS PENDING FINAL APPROVAL OF THE ELECTION BOARD**

Exhibit E

Council resolution in support of this Vote Center Plan
Exhibit commences on next page

**FINAL APPROVAL OF THE VOTE CENTER PLAN BY THE COUNTY COUNCIL IS
PENDING FINAL APPROVAL OF THE ELECTION BOARD**